



1 Rivey Hill Cottage Balsham Road

, Linton, CB21 4LE

£2,250 Per Month

Stunning 3 bedroom period flint cottage - semi detached. Rural hilltop location with outstanding countryside views. Exceptionally well presented with contemporary furnishings - fully furnished except for the 2 smaller bedrooms.
Oil central heating and double glazed. Gravel driveway with off road parking for 2 x vehicles. Gardens.
Detached annex/garage to be retained for owner's use.

Details:

Tiled entrance hallway with cloakroom - W/C. leading off. Natural stone tiles with recessed cupboard and white basin and W/C. Door through to reception room, with exposed flint feature wall. Double aspect windows with french doors to garden/terrace. Wood burning stove and wooden flooring. Built in cupboards.

Kitchen/diner with french door to terrace and door/window to front of house. Wooden/brick flooring.

Fully equipped with dual fuel range cooker, US style large fridge freezer with wine storage section, dishwasher, double ceramic sink and wooden units/butchers block. Under stair pantry with shelving.

Wooden corner staircase leading to first floor landing.

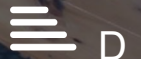
Master bedroom with balcony overlooking garden and stunning views. King size bed.

En-suite shower room fully tiled with natural stone tiles and walk in shower. Storage cupboards.

Second double sized bedroom - will be left unfurnished. Single bedroom with views - also to be left unfurnished.

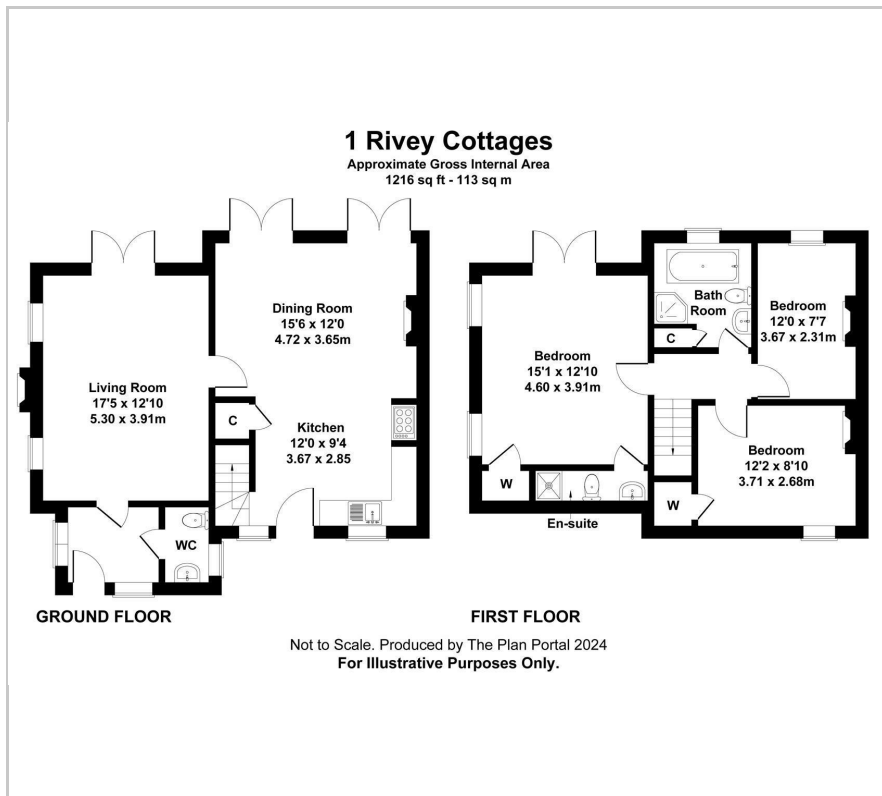
Viewing

Please contact our Admiral Estates Office on 01223 891227 if you wish to arrange a viewing appointment for this property or require further information.

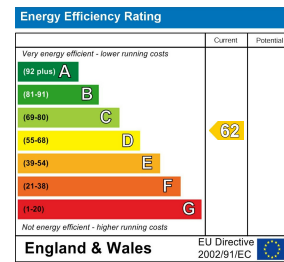


Floor Plan

Area Map



Energy Efficiency Graph



These particulars, whilst believed to be accurate are set out as a general outline only for guidance and do not constitute any part of an offer or contract. Intending purchasers should not rely on them as statements of representation of fact, but must satisfy themselves by inspection or otherwise as to their accuracy. No person in this firm's employment has the authority to make or give any representation or warranty in respect of the property.